

QuestSpecialty

EXPRESS
Wipes

Graffiti Remover

EXPRESS
Wipes

Graffiti Remover
Removedor de Graffiti

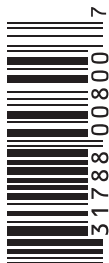
Removes Paint & Graffiti
In One Easy Step
Biodegradable Formula

DANGER/PELIGRO
CAUSES SERIOUS EYE DAMAGE.
CAUSA DAÑAR OCULAR GRAVE.

See side panel for additional safety information
Vea el panel lateral para información de seguridad adicional

NET CONTENTS: 40 9.5" X 12" (24.13 CM X 30.48 CM)
PREMOISTENED WIPES

QuestSpecialty Corporation
P.O. Box 624 • Brenham, TX 77834
800.231.0454 • www.questspecialty.com



8

EXPRESS WIPES GRAFFITI REMOVER contain powerful cleaners that quickly attack all forms of graffiti. Scrubbing action is built into the fabric to complement the effective formula. Removes graffiti caused from most paints including tough enamels. Does not contain methylene chloride or other harsh chemicals leaving towel safer to handle. Towels remain moist in container until ready for use. Biodegradable formula can be used on many surfaces including: bathroom partitions, phone booths, lamp posts, bus stops and seats, desks, wall tile, trains, aluminum siding, road signs, stainless steel, billboards, lockers. Effectively removes graffiti from almost any hard surface.

DANGER: Causes serious eye damage. Wash thoroughly after handling. Wear eye protection, protective clothing, protective gloves. **If in eyes:** Rinse cautiously with water for several minutes. Remove contact lenses, if present and easy to do. Continue rinsing. Immediately call a POISON CENTER, a doctor. **If eye irritation persists:** Get medical advice/attention.

PELIGRO: Causa dañar ocular grave. Lávese bien después de manipular. Usar protección para los ojos, ropa protectora, guantes protectores. **En caso de contacto con los ojos:** Enjuagar con agua cuidadosamente durante varios minutos. Quítense las lentes de contacto, si están presentes y son fáciles de hacer. Continuar enjuagando. Llame inmediatamente a un CENTRO DE POISON, un médico. **Si persiste la irritación de los ojos:** Buscar consejo/atención médica.

WARNING: This product can expose you to methanol, which is known to the State of California to cause birth defects or other reproductive harm. For more information go to www.P65Warnings.ca.gov.

ADVERTENCIA: Este producto puede exponerle al metanol, que es conocido por el estado de California para causar defectos de nacimiento u otros daños reproductivos. Para obtener más información, vaya a www.P65Warnings.ca.gov.

DIRECTIONS: Protective gloves are recommended while using this product. Unfold a towel and lightly scrub in a circular motion to begin dissolving paint and graffiti. Wipe up any remaining residue with a clean cloth. Repeat if necessary. Discard towel in trash after use.

SPECIAL NOTE: When using on a pre-painted surface, initially test an inconspicuous area to make sure paint is not removed along with the graffiti. These wipes may attack certain plastics.

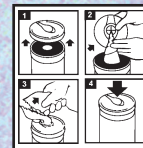
ITEM 64300001-035D



INSTRUCCIONES: Se recomienda utilizar guantes de protección durante el uso de este producto. Desenvuelva una toalla y talle con un movimiento circular para comenzar a disolver la pintura y graffiti. Limpie el residuo restante con un trapo limpio. Repita si es necesario. Tire la toalla después de usar.

NOTA: Siempre prueba pintó superficies en un área desapercibida para asegurar que esa pintura no sea quitada con el graffiti. Volver a pintar ocasional puede ser necesario. Las toallas pueden fundirse algunos plásticos.

DIRECTIONS FOR DISPENSING:



1. Remove lid by lifting upward. Remove foil seal.
2. Pull towel from center of the roll and thread through "X" on the underside of the lid.
3. Close lid. Pull towel at 90° angle.
4. Snap hinged cap back into place to ensure towels stay moist.

COMO USAR EL DISPENSARIO:

1. Levante la tapa para removerla.
2. Estire una toalla del centro del rollo y hágalo pasar por rajadura en forma de "X" en la tapa.
3. Cierre la tapa. Estire la toalla a un ángulo de 90°.
4. Asegúrese de cerrar la cejilla de la tapa para mantener las toallas húmeda.

DISPOSAL: Offer empty container for recycling. If recycling is not available, discard container in trash. Do not flush wipes.

CONTAINS (CAS#): Dimethyl Glutarate (1119-40-0), Methyl Ester of Soybean Oil (67784-80-9), Ethyl Lactate (97-64-3), Dimethyl Succinate (106-65-0), Dimethyl Adipate (627-93-0), Linear Alcohol Ethoxylate (34398-01-1), Methanol (67-56-1), 1-Undecanol (112-42-5). For more ingredient information visit www.questspecialty.com.

HMIS RATINGS: Health - 1, Flammability - 2, Reactivity - 0, Personal - B. Made in USA

600005643